

\$300,000 - 602, 1140 15 Avenue Sw, Calgary

MLS® #A2206593

\$300,000

2 Bedroom, 2.00 Bathroom, 920 sqft
Residential on 0.00 Acres

Beltline, Calgary, Alberta

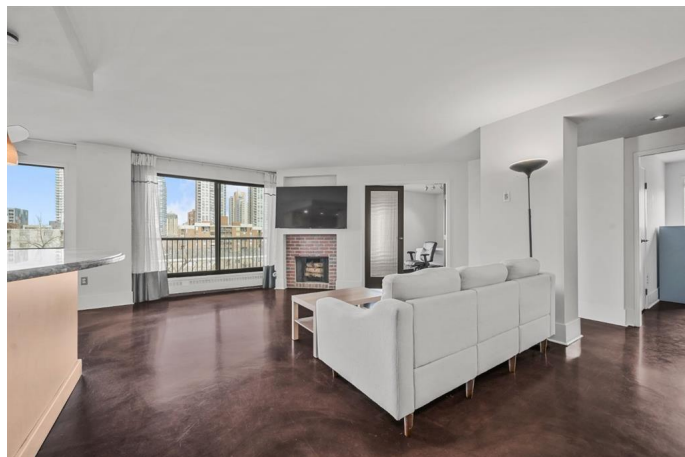
CORNER UNIT | UNDERGROUND PARKING | DOWNTOWN VIEWS AND GREEN SPACE -

Welcome home to Hempstead Estates and this exceptional 2-bedroom corner unit with views of downtown and green space. As you enter, you are welcomed to a completely open concept. The bedrooms are open with exceptional sizes and the primary is complete with a 2-piece ensuite. The layout of this unit is unique, allowing for maximum use of the space. Other key features include an updated main bathroom, new laundry units, built in appliances and updated kitchen. Book your private viewing today!

Built in 1980

Essential Information

MLS® #	A2206593
Price	\$300,000
Bedrooms	2
Bathrooms	2.00
Full Baths	1
Half Baths	1
Square Footage	920
Acres	0.00
Year Built	1980
Type	Residential
Sub-Type	Apartment
Style	Single Level Unit
Status	Active



Community Information

Address	602, 1140 15 Avenue Sw
Subdivision	Beltline
City	Calgary
County	Calgary
Province	Alberta
Postal Code	T2R 1K6

Amenities

Amenities	Elevator(s), Garbage Chute, Sauna, Secured Parking
Parking Spaces	1
Parking	Parkade, Underground

Interior

Interior Features	No Animal Home, No Smoking Home
Appliances	Built-In Oven, Dishwasher, Dryer, Electric Cooktop, Microwave, Refrigerator, Washer, Window Coverings
Heating	Baseboard
Cooling	None
Fireplace	Yes
# of Fireplaces	1
Fireplaces	Wood Burning
# of Stories	11

Exterior

Exterior Features	Balcony
Construction	Brick

Additional Information

Date Listed	March 28th, 2025
Days on Market	6
Zoning	CC-MHX

Listing Details

Listing Office	Real Broker
----------------	-------------

Data is supplied by Pillar 9â„¢ MLSÂ® System. Pillar 9â„¢ is the owner of the copyright in its MLSÂ® System. Data is deemed reliable but is not guaranteed accurate by Pillar 9â„¢. The trademarks MLSÂ®, Multiple Listing ServiceÂ® and the associated logos are owned by The Canadian Real Estate Association (CREA) and identify the quality of services provided by real estate professionals who are members of CREA. Used under license.