

\$760,500 - 1107, 20 Dawson Wharf Mount, Chestermere

MLS® #A2188016

\$760,500

0 Bedroom, 0.00 Bathroom,
Commercial on 0.00 Acres

Dawson's Landing, Chestermere, Alberta

Discover a prime opportunity in a brand-new plaza located in t Dawson Landing community of Chestermere. This turn-key ready retail bay offers approximately 1,300 +/- square feet of versatile space, ideal for a wide range of businesses. The plaza is already home to a diverse mix of successful tenants, including a Chai Bar, liquor store, daycare, Chestermere Law, physiotherapy clinic, and more.

Built in 2024

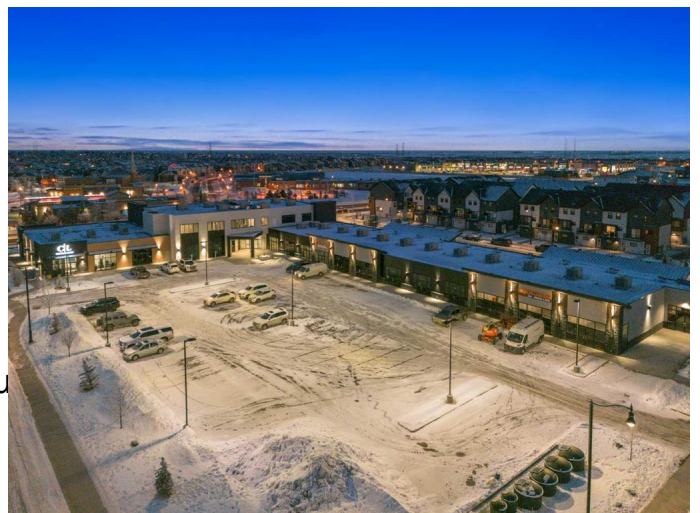
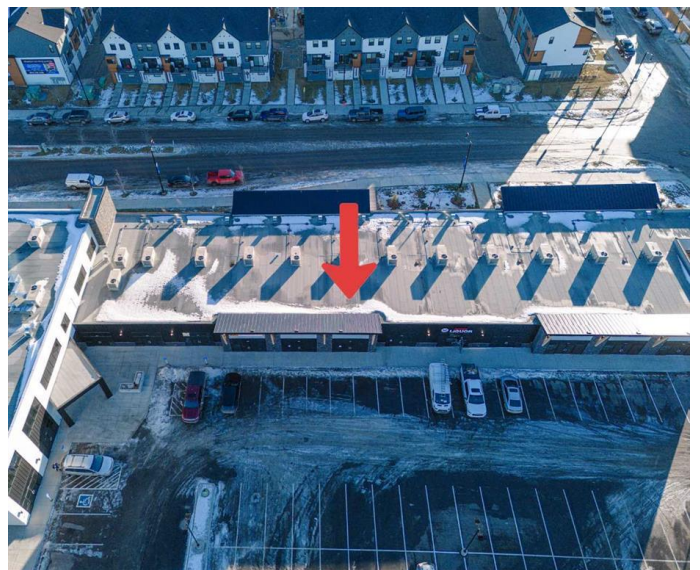
Essential Information

MLS® #	A2188016
Price	\$760,500
Bathrooms	0.00
Acres	0.00
Year Built	2024
Type	Commercial
Sub-Type	Retail
Status	Active

Community Information

Address	1107, 20 Dawson Wharf Mou
Subdivision	Dawson's Landing
City	Chestermere
County	Chestermere
Province	Alberta
Postal Code	T1X 2Z5

Additional Information



Date Listed January 15th, 2025

Days on Market 78

Zoning DC

Listing Details

Listing Office Century 21 Bravo Realty

Data is supplied by Pillar 9â,,ç MLSÂ® System. Pillar 9â,,ç is the owner of the copyright in its MLSÂ® System. Data is deemed reliable but is not guaranteed accurate by Pillar 9â,,ç. The trademarks MLSÂ®, Multiple Listing ServiceÂ® and the associated logos are owned by The Canadian Real Estate Association (CREA) and identify the quality of services provided by real estate professionals who are members of CREA. Used under license.